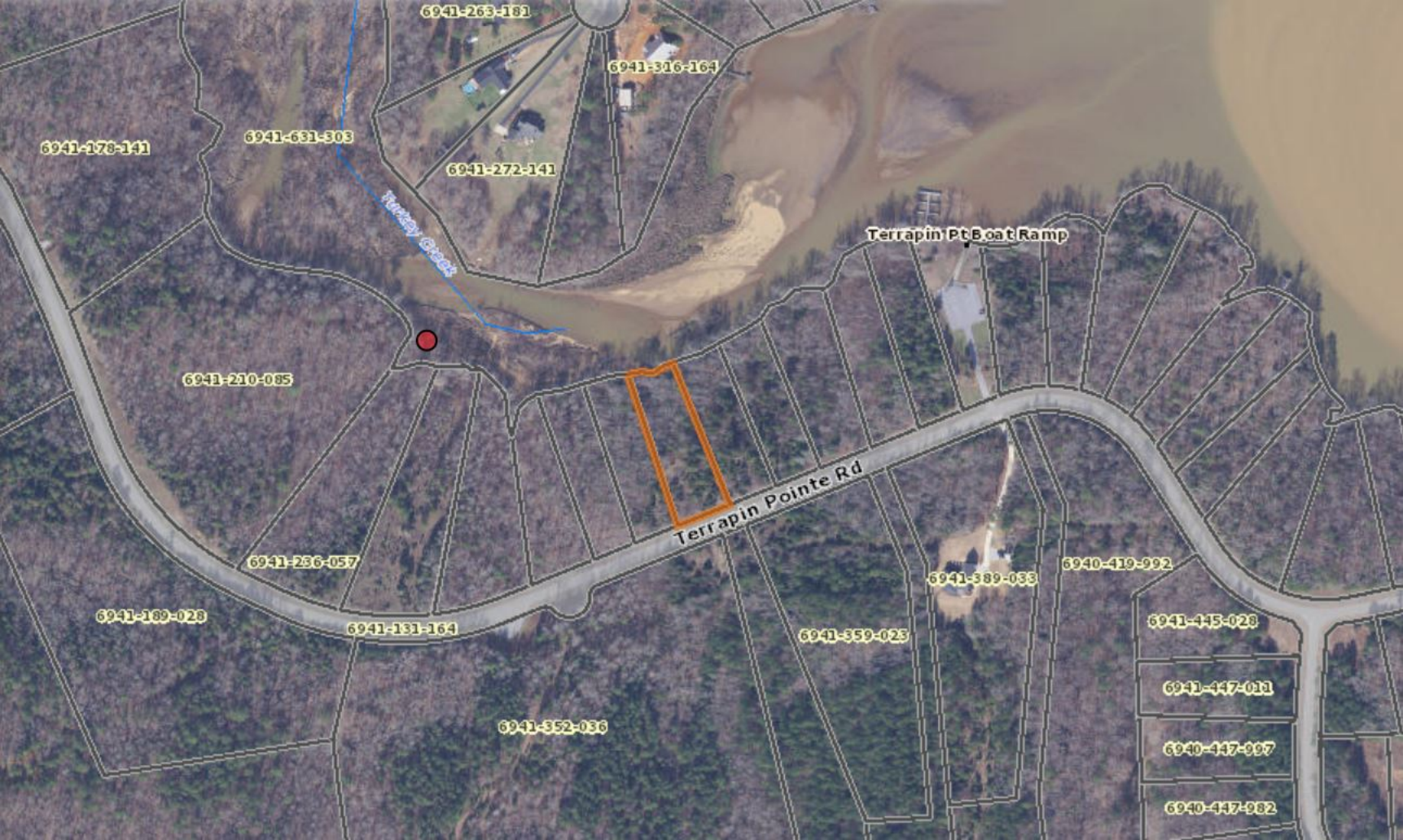




TERRAPIN

PRIVATE PROPERTY
NO
Hunting
Fishing
Trespassing



6941-263-181

6941-316-164

6941-278-141

6941-631-808

6941-272-141

Terrapin Pt Boat Ramp

Terrapin Creek

6941-210-085

Terrapin Pointe Rd

6941-256-057

6941-389-038

6940-419-992

6941-189-028

6941-181-164

6941-359-025

6941-415-028

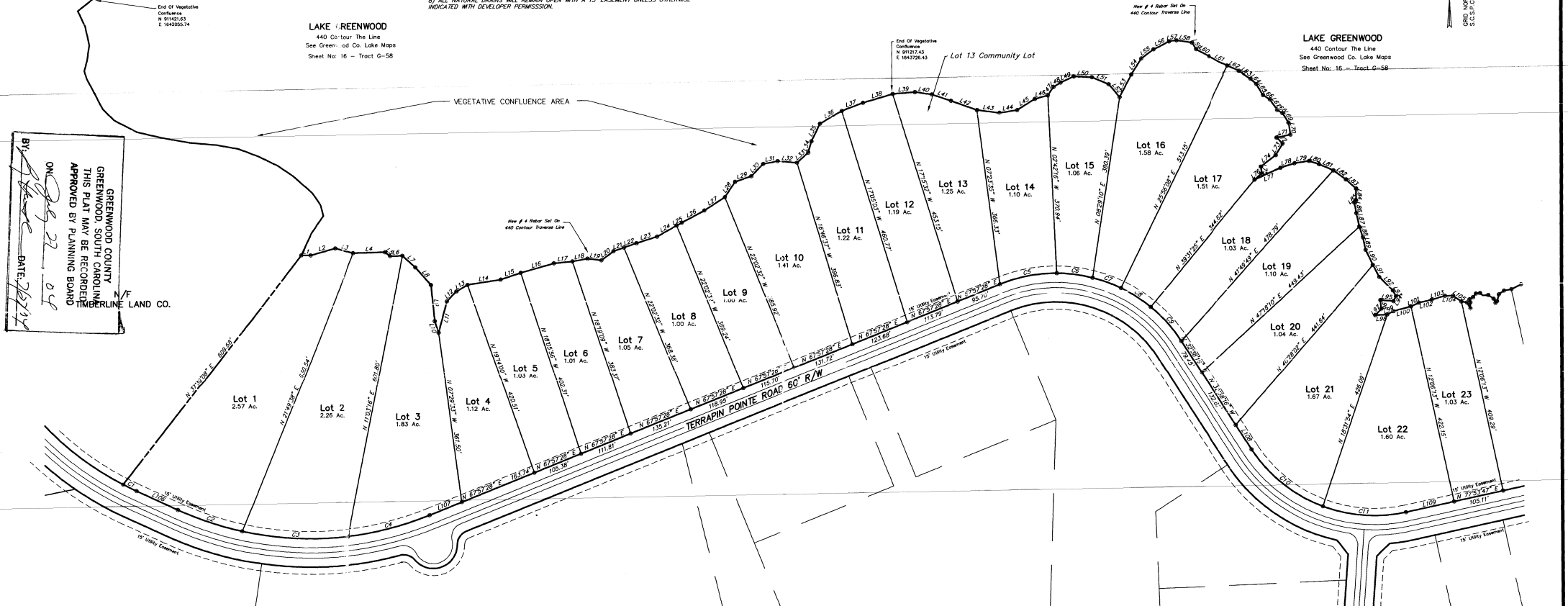
6941-352-036

6941-447-021

6940-447-007

6940-447-002

NOTES:
 1) NO ABSTRACT OF TITLE, NOR TITLE COMMITMENT, OR RESULTS OF A TITLE SEARCH WERE FURNISHED TO THE SURVEYOR. ALL DOCUMENTS OF RECORD REVIEWED ARE NOTED HEREON.
 2) COPYRIGHT © NEWBY - PROCTOR & ASSOC., INC. ALL RIGHTS RESERVED. NO PARTS OF THIS DRAWING MAY BE REPRODUCED BY PHOTOCOPYING, RECORDING OR BY ANY OTHER MEANS, OR STORED, PROCESSED OR TRANSMITTED IN OR BY ANY COMPUTER OR OTHER SYSTEMS WITHOUT THE PRIOR WRITTEN PERMISSION OF THE SURVEYOR. COPIES OF THIS PLAN WITHOUT AN ORIGINAL SIGNATURE AND IMPRESSION SEAL ARE NOT VALID.
 3) CERTIFICATION IS MADE TO THOSE PERSONS FOR WHOM THIS PLAN WAS PREPARED AND IS NOT TRANSFERABLE.
 4) STATE PLANE COORDINATES WERE ESTABLISHED BY GPS STATIC METHOD, BASED ON NGS MONUMENTS PARK AND HAMPTON, NAD 83 (1985), NGVD 29 PROJECT COMBINED FACTOR = 0.999834235.
 5) VEGETATED STREAM CONFLUENCE AND WOODY DEBRIS AREA SCALED FROM MAPS PROVIDED BY THE GREENWOOD COUNTY ENGINEERS OFFICE.
 6) THERE WILL BE A 15' EASEMENT ALONG ALL SIDE LOT LINES, (7.5' EACH SIDE), AND A 15' EASEMENT ALONG ROAD RIGHT-OF-WAY.
 7) THE 442.8 ELEVATION IS THE 100 YEAR FLOOD ZONE.
 8) ALL NATURAL DRAINAGE WILL REMAIN OPEN WITH A 15' EASEMENT UNLESS OTHERWISE INDICATED WITH DEVELOPER PERMISSION.



GREENWOOD COUNTY
 GREENWOOD, SOUTH CAROLINA
 TIMBERLINE LAND CO.
 APPROVED BY PLANNING BOARD
 DATE 09/27/04

LAKE GREENWOOD
 440 Contour The Line
 See Greenwood Co. Lake Maps
 Sheet No. 16 - Tract G-58

LAKE GREENWOOD
 440 Contour The Line
 See Greenwood Co. Lake Maps
 Sheet No. 16 - Tract G-58

CURVE	RADIUS	LENGTH	TANGENT	CHORD	BEARING	DEF. AN.
C1	631.75	30.92	30.92	S. 634.94 E. 249.17		
C2	664.62	141.77	71.16	141.50	S. 712.27 E. 121.19	
C3	664.62	223.26	112.69	222.22	N. 87.09 D1 E. 191.41	
C4	696.52	117.40	59.43	116.44	N. 23.93 E. 121.32	
C5	310.84	121.85	61.72	121.07	S. 29.11 W. 222.36	
C6	310.84	76.05	38.22	75.86	N. 82.34 E. 143.06	
C7	310.84	62.39	31.30	62.28	N. 69.48 E. 112.88	
C8	310.84	73.72	37.03	73.54	N. 57.81 E. 133.17	
C9	310.84	96.78	48.78	96.39	N. 41.32 E. 173.01	
C10	304.99	104.00	52.00	103.74	S. 85.30 E. 362.92	
C11	304.99	175.78	87.89	173.36	S. 85.30 E. 333.01	

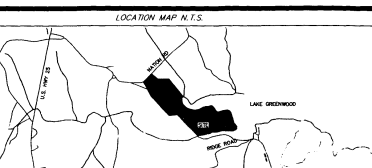
LINE	BEARING	DISTANCE	LINE	BEARING	DISTANCE	LINE	BEARING	DISTANCE	LINE	BEARING	DISTANCE	LINE	BEARING	DISTANCE	LINE	BEARING	DISTANCE
L1	S. 89.10 E. 22.4	19.35	L21	N. 70.91 S. 3.7	23.05	L41	S. 71.9 S. 4.3	42.08	L61	S. 64.0 S. 1.7	43.69	L81	S. 66.2 S. 4.6	32.46	L101	N. 64.2 S. 4.6	18.10
L2	N. 74.0 W. 46.4	53.87	L22	N. 70.91 S. 3.7	27.99	L42	S. 70.4 S. 4.2	37.83	L62	S. 65.9 S. 0.7	27.78	L82	S. 67.2 S. 3.0	32.39	L102	N. 65.8 S. 5.2	27.52
L3	S. 73.0 E. 101.1	40.01	L23	N. 72.9 S. 0.0	44.73	L43	S. 82.0 S. 7.8	47.45	L63	S. 67.4 S. 4.2	28.30	L83	S. 67.9 S. 4.5	28.43	L103	N. 74.4 S. 2.1	28.96
L4	N. 81.0 S. 41.1	67.05	L24	N. 60.4 S. 0.4	46.80	L44	N. 81.0 S. 11.7	37.59	L64	S. 47.8 S. 2.2	16.24	L84	S. 60.1 S. 5.2	25.09	L104	S. 89.1 S. 4.4	17.13
L5	S. 49.1 S. 3.6	13.07	L25	N. 60.4 S. 0.4	12.80	L45	N. 50.0 S. 1.9	43.42	L65	S. 31.0 S. 5.7	26.72	L85	S. 47.1 S. 8.5	35.47	L105	S. 64.5 S. 3.0	21.10
L6	N. 89.0 E. 101.1	26.88	L26	N. 61.0 S. 0.2	53.20	L46	N. 75.0 S. 11.7	28.38	L66	S. 48.2 S. 4.5	17.33	L86	S. 47.6 S. 1.0	27.68	L106	S. 55.1 S. 1.4	84.95
L7	S. 47.7 S. 5.4	35.86	L27	N. 57.1 S. 1.5	51.19	L47	N. 34.0 S. 11.4	20.56	L67	S. 33.1 S. 5.1	26.50	L87	S. 1.1 S. 0.8	29.59	L107	N. 67.2 S. 2.8	71.89
L8	S. 41.2 S. 1.9	49.32	L28	N. 33.8 S. 2.1	38.44	L48	N. 30.0 S. 1.0	17.53	L68	S. 60.3 S. 4.5	11.00	L88	S. 1.7 S. 9.2	23.80	L108	N. 62.9 S. 1.0	81.05
L9	S. 05.4 S. 2.8	76.24	L29	N. 71.9 S. 2.2	35.93	L49	N. 64.0 S. 5.3	30.00	L69	S. 32.3 S. 3.0	23.50	L89	S. 11.5 S. 0.8	26.70	L109	N. 77.9 S. 4.7	102.74
L10	S. 18.1 S. 5.2	25.85	L30	N. 43.5 S. 3.2	35.76	L50	S. 86.0 S. 4.4	38.42	L70	S. 09.3 S. 4.8	24.88	L90	S. 25.1 S. 5.0	35.17			
L11	N. 14.8 S. 2.4	68.59	L31	N. 39.5 S. 2.9	31.96	L51	S. 87.0 S. 4.8	37.35	L71	S. 77.3 S. 0.9	30.18	L91	S. 27.4 S. 5.0	28.86			
L12	N. 89.0 E. 101.1	26.88	L32	N. 43.5 S. 4.5	41.22	L52	S. 38.0 S. 5.5	34.81	L72	S. 47.0 S. 0.7	17.70	L92	S. 45.1 S. 5.5	39.69			
L13	N. 60.9 S. 2.6	26.91	L33	N. 48.2 S. 4.0	31.51	L53	N. 27.0 S. 7.9	52.68	L73	S. 31.8 S. 2.1	28.32	L93	S. 28.3 S. 2.6	13.61			
L14	N. 60.2 S. 4.5	70.02	L34	N. 15.4 S. 4.8	24.53	L54	N. 32.0 S. 1.0	39.05	L74	S. 5.0 S. 1.8	33.72	L94	S. 27.9 S. 0.9	11.67			
L15	N. 85.0 S. 1.5	44.31	L35	N. 71.4 S. 0.5	40.66	L55	N. 53.0 S. 1.1	31.77	L75	S. 08.0 S. 1.3	14.54	L95	N. 69.0 S. 0.2	27.33			
L16	N. 74.8 S. 5.9	72.30	L36	N. 60.1 S. 5.5	52.37	L56	N. 64.0 S. 5.2	36.24	L76	S. 49.2 S. 2.1	19.66	L96	S. 05.3 S. 3.1	18.70			
L17	N. 84.0 S. 4.0	38.78	L37	N. 69.0 S. 5.0	47.65	L57	N. 81.0 S. 7.1	15.87	L77	N. 69.2 S. 0.6	36.95	L97	S. 43.4 S. 1.1	17.80			
L18	N. 79.5 S. 1.9	32.08	L38	N. 73.9 S. 3.8	64.45	L58	S. 81.0 S. 5.0	32.68	L78	N. 72.4 S. 4.4	31.68	L98	N. 62.3 S. 4.4	74.92			
L19	S. 82.0 S. 4.1	29.24	L39	N. 85.0 S. 1.7	46.48	L59	S. 32.0 S. 1.4	15.96	L79	N. 81.2 S. 1.1	15.96	L99	N. 60.9 S. 5.2	14.35			
L20	N. 53.4 S. 5.9	31.31	L40	S. 82.0 S. 3.9	35.74	L60	S. 60.0 S. 0.8	32.70	L80	S. 71.0 S. 4.6	21.50	L100	N. 74.4 S. 4.0	38.16			

FILED FOR RECORD 07/28/04
 AT 02:22:10PM BOOK 00123 PAGE 00042
 Isaac Roon - Clerk of Court
 Greenwood County Courthouse

8506 Bk=123 P=4-2
 Deliver To: TERRAPIN POINTE

6941-086-269
 EW JB

TERRAPIN POINTE



NO.	DATE	DESCRIPTION	BY
1	10/28/03	TO CHANGE ROAD NAME	RD.P.
2	7/02/04	TO CHANGE EYE BROW LOCATION	RD.P.
3	7/06/04	TO MOVE NOTE ABOUT SEPTIC TANKS	RD.P.



Newby - Proctor & Associates, Inc.
 Land Surveyors
 514 East Laurel Ave.
 Greenwood, S. C. 29649
 Ph. (864) 223-3787

I hereby state that to the best of my knowledge, information, and belief, the survey shown hereon was made in accordance with the Minimum Standards Manual for the practice of Land Surveying in South Carolina, and meets or exceeds the requirements for a Class A survey as specified therein.

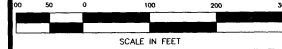
R. DANIEL PROCTOR P.L.S. # 11068



PLAT TERRAPIN POINTE SUBDIVISION
 PREPARED FOR TIMBERLINE LAND CO.

COUNTY OF GREENWOOD SOUTH CAROLINA

SCALE: 1" = 100' DATE: 9/29/03



SURVEY DATA	
INSTRUMENT	GTS-303
ADJUSTMENT	NONE
QUANTIFICATION	
TAX MAP	N/A
PARCEL	N/A
FIELD WORK	M.P.
DRAWN BY	R.D.P.
FILE NO.	C-1033041