





CAVE



Natural
**12 PACK
12oz
CANS**



OLD BEER

BUD LIGHT

Budweiser

BEER CAVE

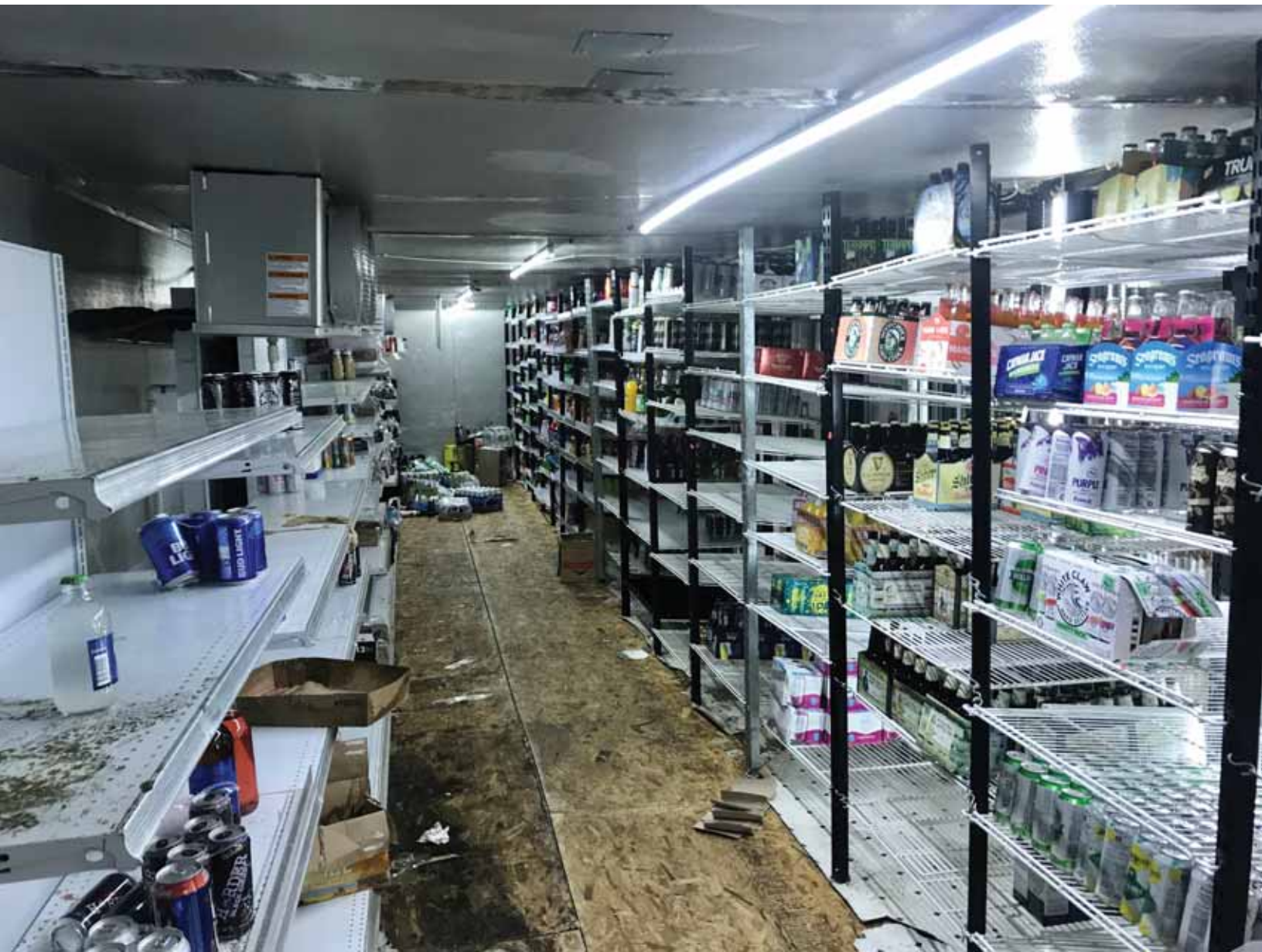
Michelob
ULTRA



BUD
LIGHT
SELTZER







B-35

Employees
Only



8x6'



FRONT
8x6'













NOIS-ALLERGY NOTICE
 This establishment is a food service facility. It is not a restaurant. It is a grocery store. It is not a restaurant. It is a grocery store.

R & R Grocery
 143 Old Hwy 27 South, Rossville, Ga 30170 770-954-4766

<p>Breakfast Breakfast Plate \$5.99 <i>Top 3 items from menu plus coffee and fruit</i></p> <p>Biscuits Plain Biscuit \$1.99 Cheddar Biscuit \$2.99 Flap Biscuit \$2.99 Cream Cheese Biscuit \$2.99</p> <p>Meat Biscuit Bacon, Sausage, Turkey, Beef, Pork, Veg Country Ham, Cheddar Biscuit \$2.99 Add: Egg \$1 Add: Top \$1</p> <p>Sides Hashbrowns, Egg \$1.99 Omelet \$1.99 Pancake \$1.99</p>	<p>Lunch & Dinner Combos #1 Cheeseburger #1 Chicken or Claf Biscuit #2 Chicken Sandwich #2 Soft #3 Soft Chicken Finger #3 Soft Sandwich *See Menu for more items \$1.99 \$1.99</p> <p>At a Cost #1 Soft Drink \$1.99 #2 Soft Drink \$1.99 #3 Soft Drink \$1.99 #4 Soft Drink \$1.99 #5 Soft Drink \$1.99 #6 Soft Drink \$1.99 #7 Soft Drink \$1.99 #8 Soft Drink \$1.99 #9 Soft Drink \$1.99 #10 Soft Drink \$1.99</p> <p>Kids Plates #1 Soft Drink, #2 Soft Drink, #3 Soft Drink #4 Soft Drink, #5 Soft Drink, #6 Soft Drink</p> <p>Drinks #1 Soft Drink \$1.99 #2 Soft Drink \$1.99 #3 Soft Drink \$1.99 #4 Soft Drink \$1.99 #5 Soft Drink \$1.99 #6 Soft Drink \$1.99 #7 Soft Drink \$1.99 #8 Soft Drink \$1.99 #9 Soft Drink \$1.99 #10 Soft Drink \$1.99</p> <p>Side Orders #1 Soft Drink \$1.99 #2 Soft Drink \$1.99 #3 Soft Drink \$1.99 #4 Soft Drink \$1.99 #5 Soft Drink \$1.99 #6 Soft Drink \$1.99 #7 Soft Drink \$1.99 #8 Soft Drink \$1.99 #9 Soft Drink \$1.99 #10 Soft Drink \$1.99</p>
---	---

ORDER HERE









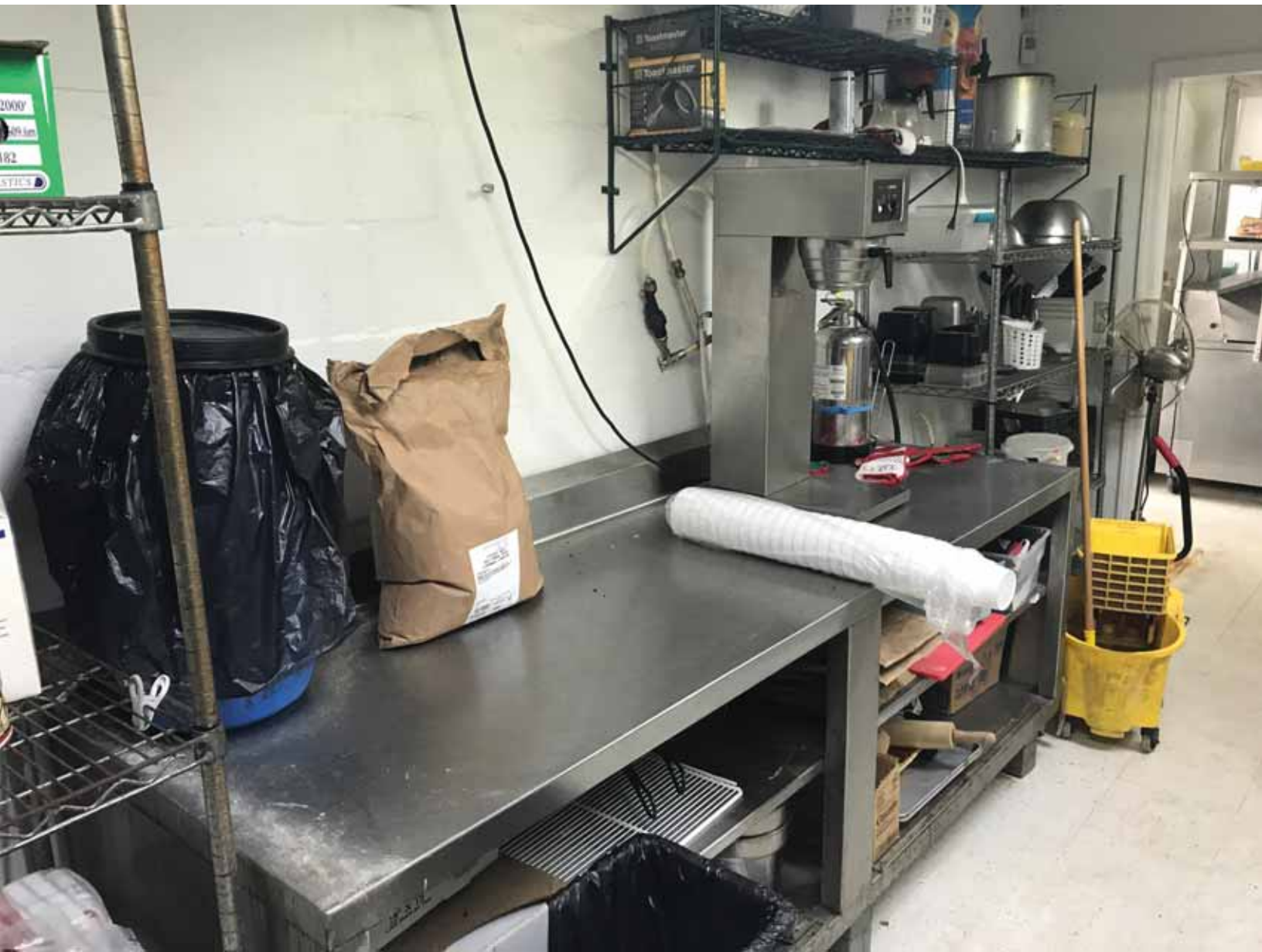


WEST CHESTER
FIRE SUPPLY
1730 N. 10TH ST.
WILMINGTON, DE 19801
TEL: 302-439-1111
FAX: 302-439-1112
WWW.WESTCHESTERFIRE.COM

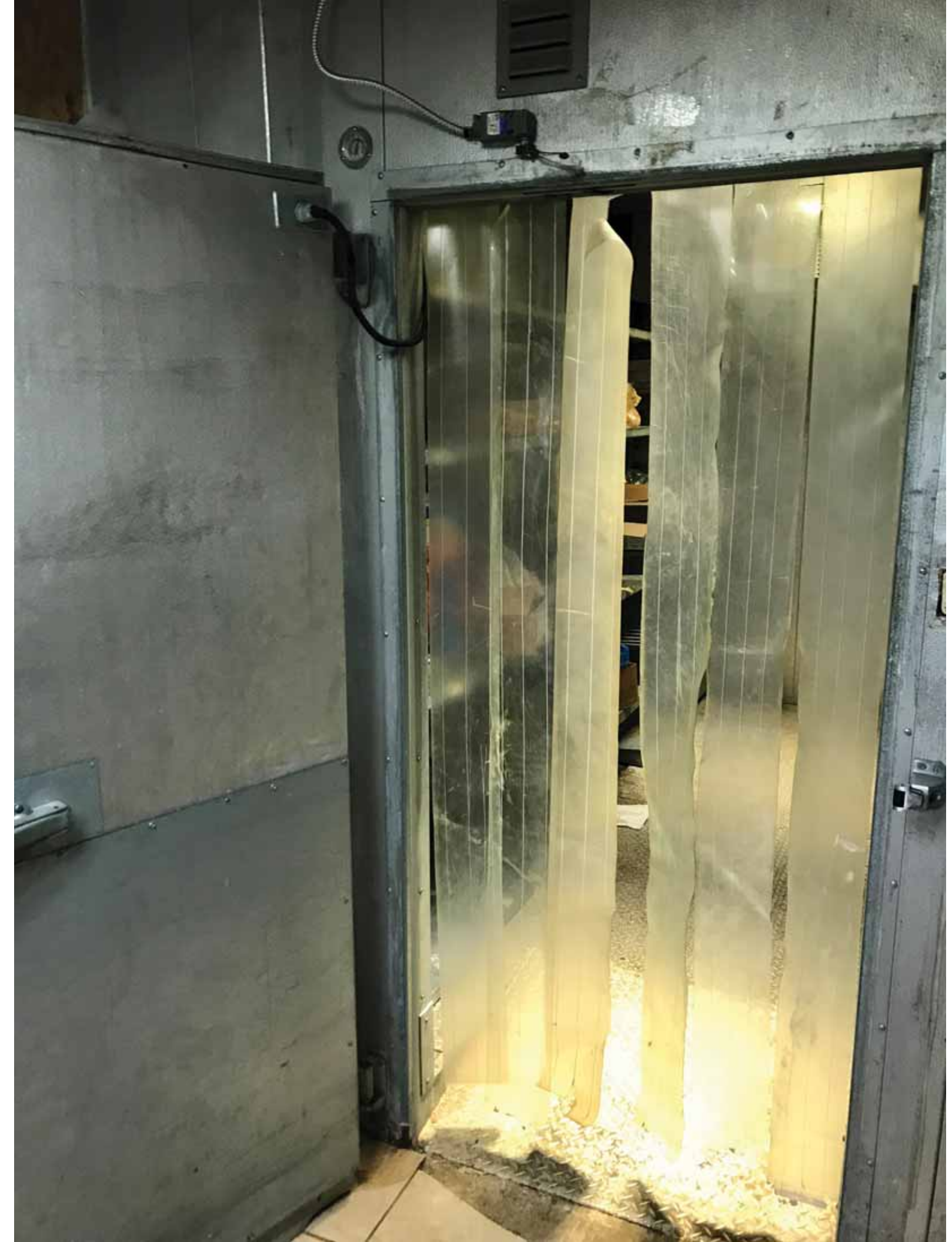
Protex II
RESTAURANT
FIRE SUPPRESSION
SYSTEM
Meets the requirements of Standard UL 200
UL LISTED
L4600







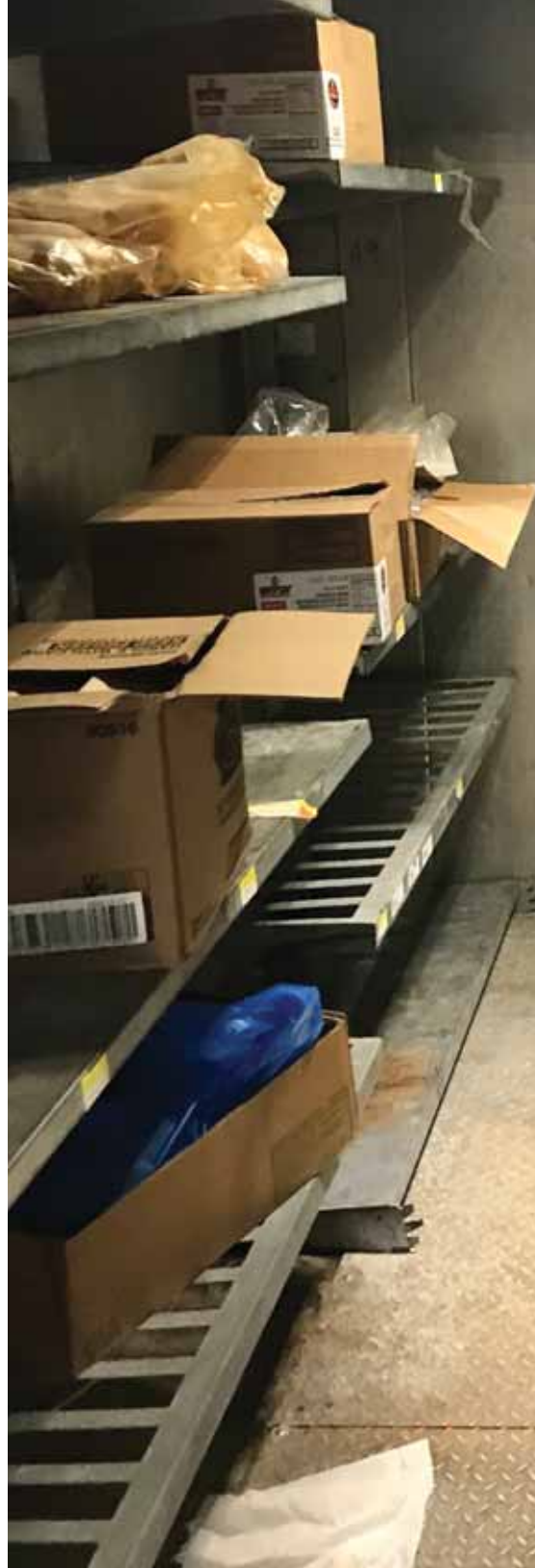






A10 A12

A13



KYSOR/NEEDHAM


Produce and Floral Chemical Safe Use and Authorization Chart
Cuadro de uso seguro y autorización de los químicos de Flores y Verduras y Florales

Approved Users: _____ (Signature) _____ (Name)
Approved Date: _____

Chemical Name	Approved Users		Approved Date	
	Signature	Name	Signature	Name
Ammonia				
Bleach				
Disinfectant				
Hand Sanitizer				
Hydrogen Peroxide				
Isopropyl Alcohol				
Linseed Oil				
Mineral Oil				
Motor Oil				
Paraffin				
Vegetable Oil				
Wax				
Water				

Safe Use Instructions:

- 1. Read and understand the label instructions for all chemicals.
- 2. Use chemicals in a well-ventilated area.
- 3. Wear appropriate personal protective equipment (PPE) such as gloves, goggles, and a mask.
- 4. Do not mix chemicals unless instructed to do so.
- 5. Store chemicals in their original containers and away from children and pets.
- 6. Dispose of chemicals properly according to local regulations.



Don't Open
This Door

WARNING
THIS DOOR!

Call 1-800-368-6148

For Information:
1-800-368-6148



AREA / NEEDS

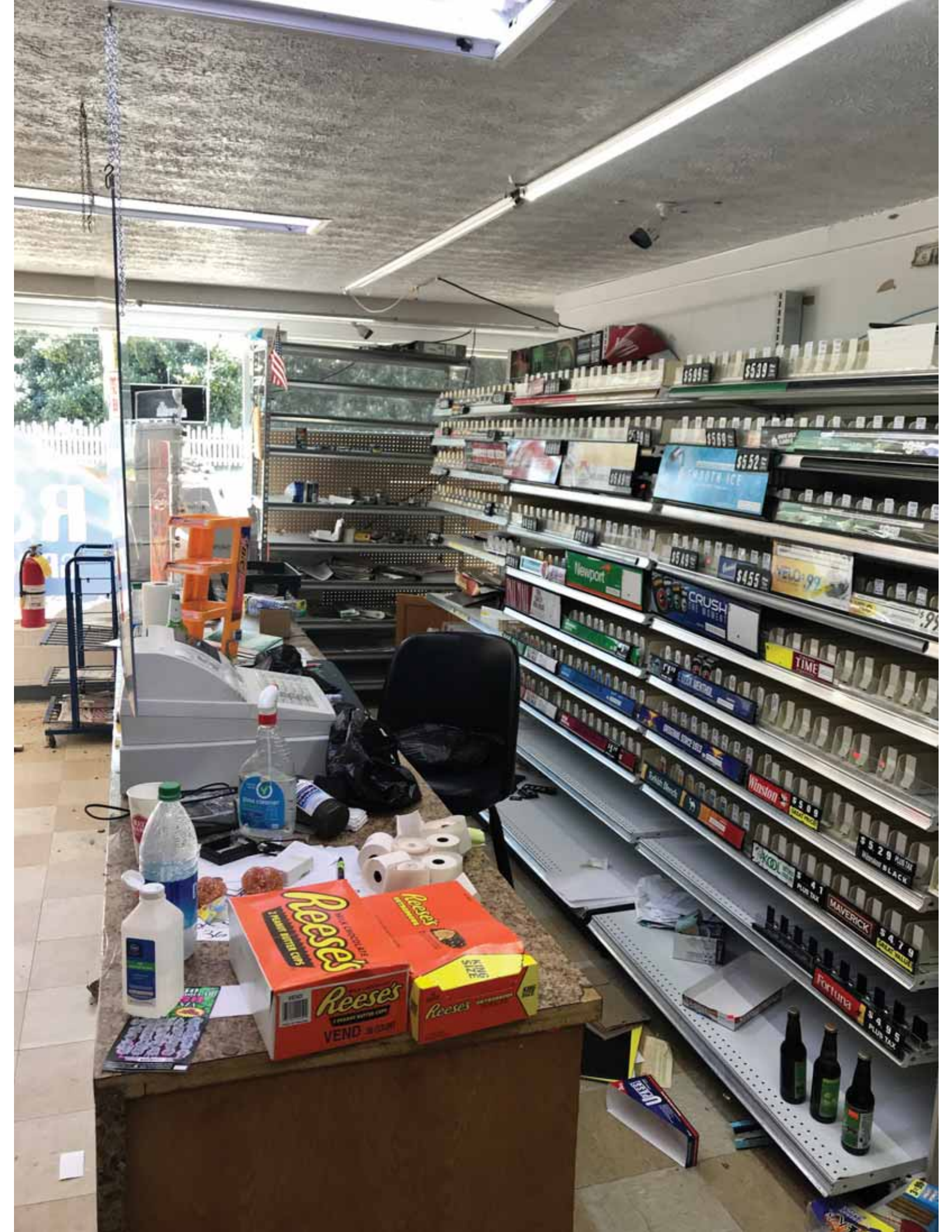
CHOKING
ADULT EMERGENCY CARE

Common Victim

Unconscious Victim









Coca-Cola

ICE COLD

BALANCE
EAT
DRINK
& DO

HT
IG











CRYSTAL CUBES ICE
770-739-5555

Better Massage for Brain and Body
Red Dawn
10 lb bag of ice

Sleep Walker
Increase focus & elevate mood
10 lb bag of ice

C

E

E

C
E
E









