

Jimmy H. Cowan, Jr., CFA

Marion County Property Appraiser



501 SE 25th Avenue, Ocala, FL 34471 Telephone: (352) 368-8300 Fax: (352) 368-8336

2022 Property Record Card

2008-010-002

Prime Key: 2361671

[Beta MAP IT+](#)

Current as of 3/8/2022

[Property Information](#)

IVAN REALTY LLC
35 FAIR OAKS CT
NEWNAN GA 30263

[Taxes / Assessments:](#)

Map ID: 74

[Millage:](#) 9002 - UNINCORPORATED

[M.S.T.U.](#)

PC: 00

Acres: .26

Current Values NOT Available

[Ex Codes:](#)

[History of Assessed Values](#)

Year	Land Just	Building	Misc Value	Mkt/Just	Assessed Val	Exemptions	Taxable Val
2021	\$3,570	\$0	\$0	\$3,570	\$2,420	\$0	\$2,420
2020	\$2,200	\$0	\$0	\$2,200	\$2,200	\$0	\$2,200
2019	\$2,200	\$0	\$0	\$2,200	\$2,200	\$0	\$2,200

[Property Transfer History](#)

Book/Page	Date	Instrument	Code	Q/U	V/I	Price
6619/0374	07/2017	05 QUIT CLAIM	0	U	V	\$100
5267/0398	10/2009	05 QUIT CLAIM	7 PORTIONUND INT	U	V	\$100
5238/1651	07/2009	57 TRANSFER FROM BANK	4 V-APPRAISERS OPINION	U	V	\$2,100
UNRE/INST	02/2009	47 CORP DISVD	0	U	V	\$100
4872/1570	08/2007	31 CERT TL	0	U	V	\$100
4439/1513	05/2006	07 WARRANTY	2 V-SALES VERIFICATION	U	V	\$17,000
3363/1687	05/1986	07 WARRANTY	4 V-APPRAISERS OPINION	U	V	\$3,900

[Property Description](#)

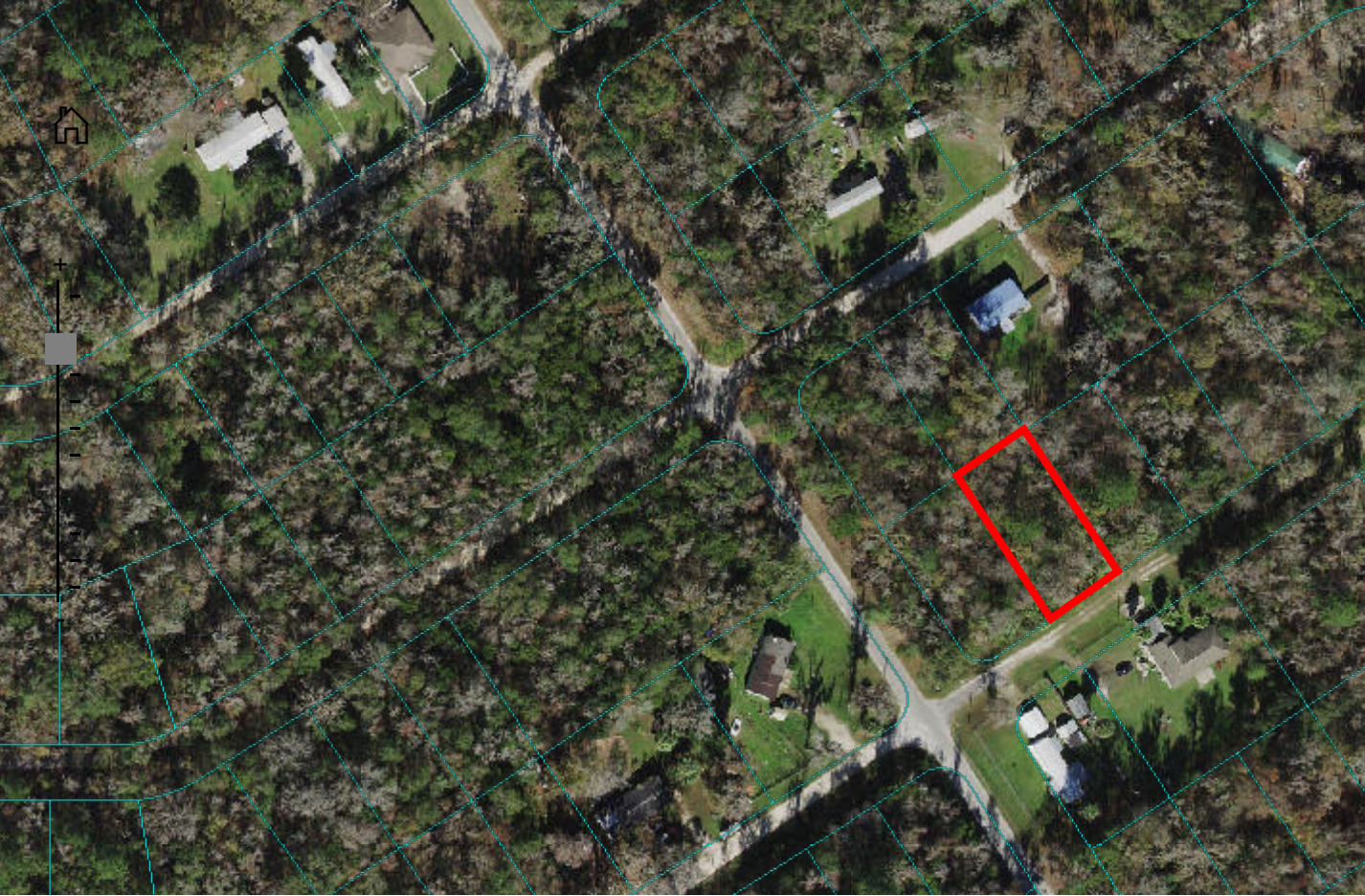
SEC 19 TWP 15 RGE 20
PLAT BOOK K PAGE 025
RAINBOW PARK UNIT 8
BLK 10 LOT 2

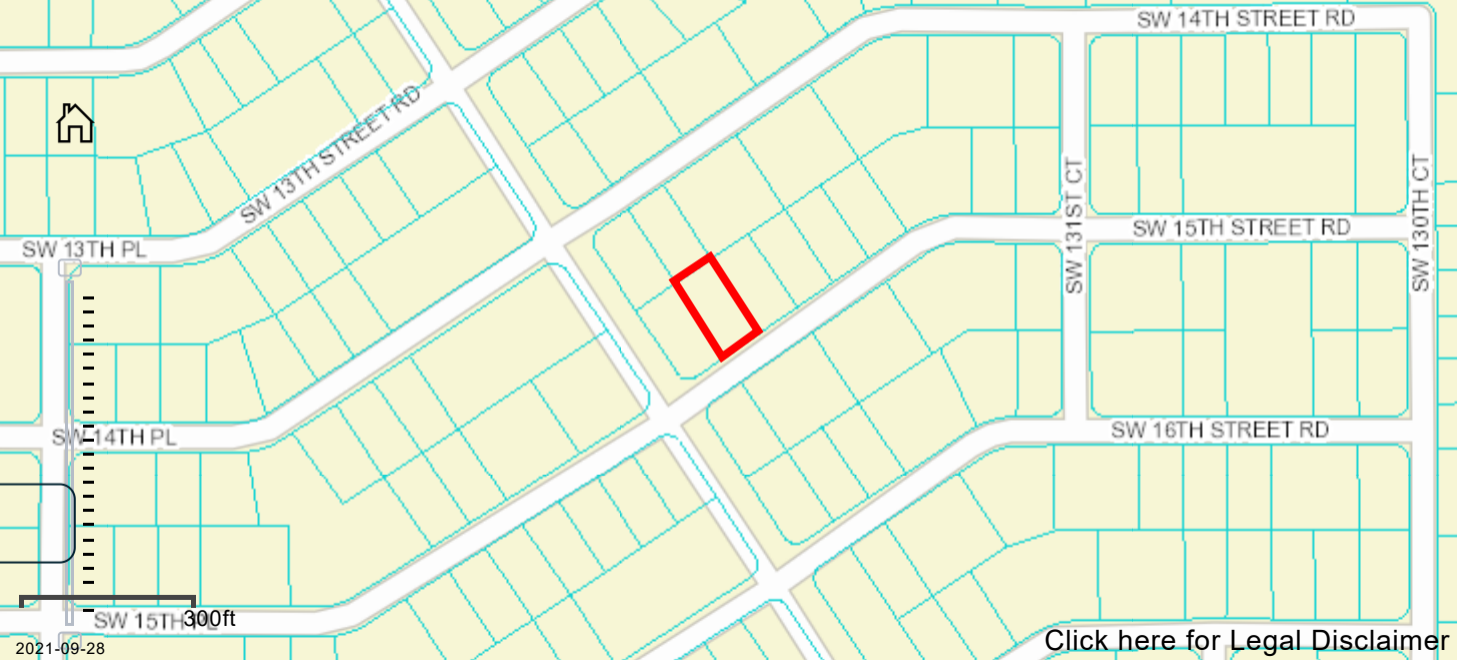
Parent Parcel: 2008-000-011

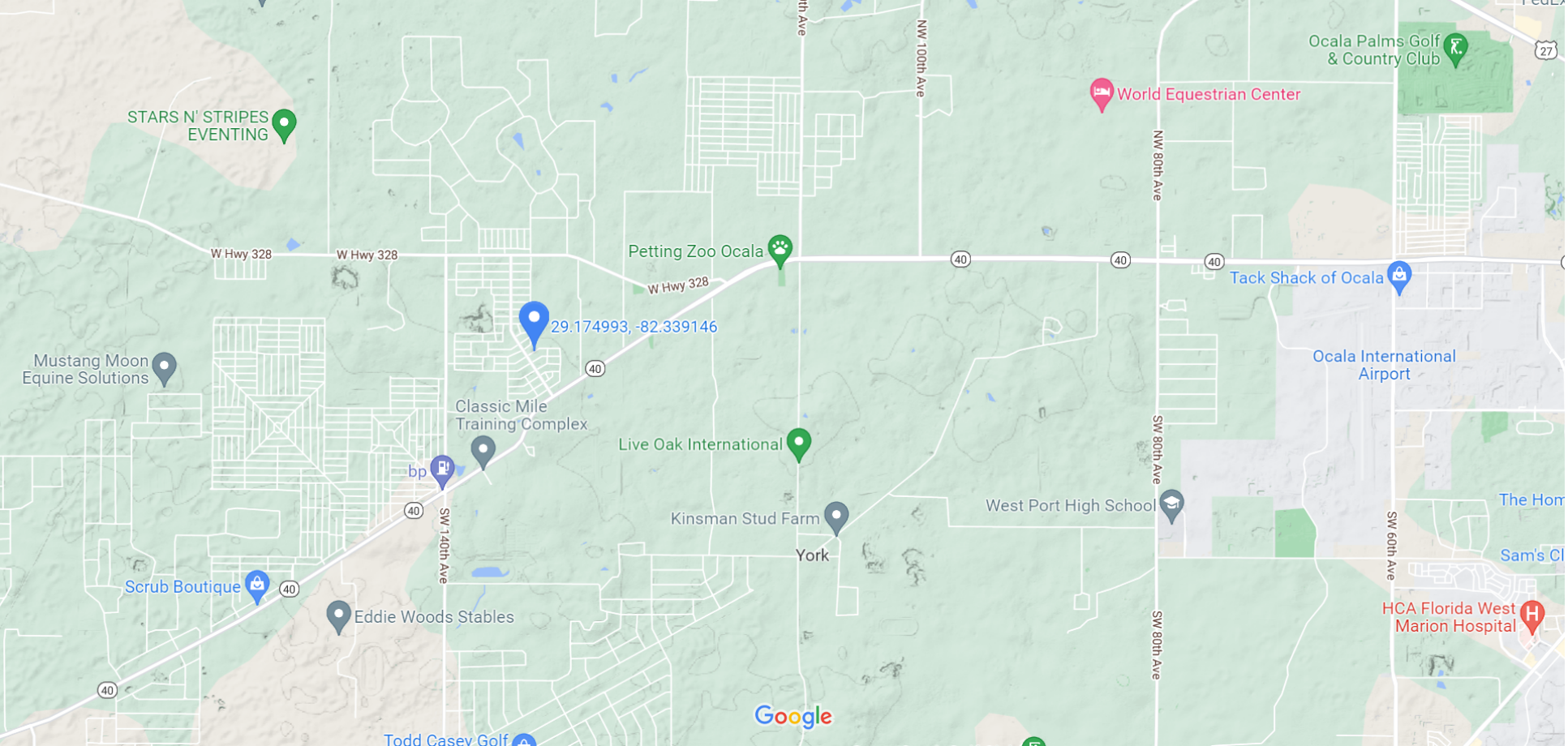
[Land Data - Warning: Verify Zoning](#)

Use	CUse	Front	Depth	Zoning	Units	Type	Rate	Loc	Shp	Phy	Class	Value	Just Value
0001		78.0	144.0	R4	1.00	LT							
Neighborhood 3995 - RAINBOW PARK HOMES													
Mkt: 4 70													

[Miscellaneous Improvements](#)







29.174993, -82.339146

STARS N' STRIPES
EVENTING

Mustang Moon
Equine Solutions

Scrub Boutique

Eddie Woods Stables

Classic Mile
Training Complex

Petting Zoo Ocala

Live Oak International

Kinsman Stud Farm

York

West Port High School

Tack Shack of Ocala

Ocala International
Airport

World Equestrian Center

Ocala Palms Golf
& Country Club

HCA Florida West
Marion Hospital

